

## Thermostatic Valve Type: TV

### Application

Regulation of the oil flow in oil-injected screw compressors. Fastest possible regulation of the oil temperature to the optimum operating temperature to ensure full performance of the oil and to avoid premature condensation fall-out.

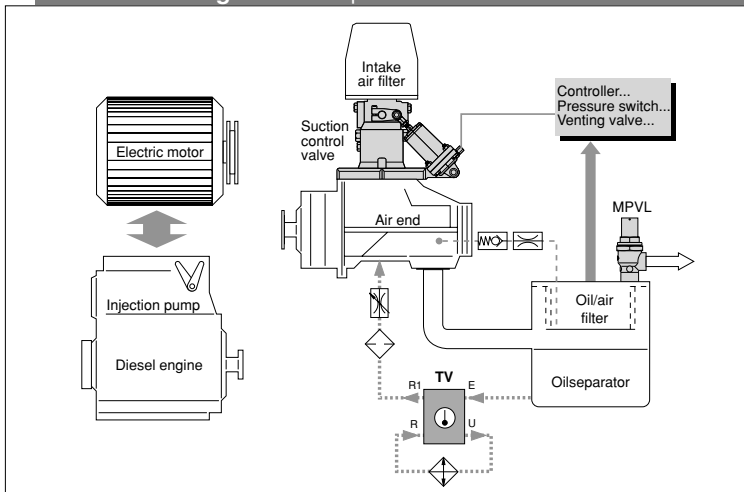
### Function

Regulation of the oil flow in oil-injected screw compressors. Fastest possible regulation of the oil temperature to the optimum operating temperature to ensure full performance of the oil and to avoid premature condensation fall-out.



**⚠ Attention! Never attempt to disassemble a cylinder whilst under pressure!**

Installation Diagram for Compressor with TV 1/2-TV1



### Installation

The thermostatic valve is installed between the oil separator and the oil filter.

### Ports:

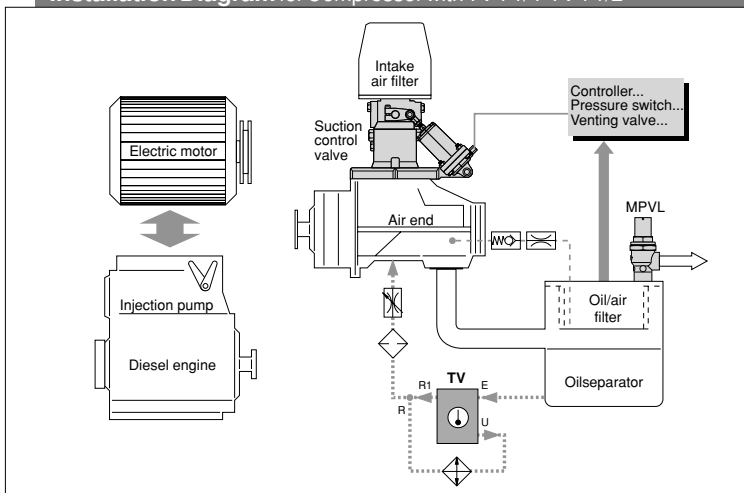
- E Oil coming from the oil separator
- U Hot oil going to the oil cooler
- R Oil coming back from the oil cooler
- R1 Oil going to the air end

If port R is not available on the valve, the oil coming back from the oil cooler must come into a T-piece between port R1 and the filter.

### Ordering Details:

Type designation and regulation temperature range, e.g. TV 1/2-55°

Installation Diagram for Compressor with TV 1 1/4-TV 1 1/2



## HOERBIGER KOMPRESSORTECHNIK GMBH

Im Forchet 5 • D-86956 Schongau

Phone +49 (0)8861-210-0 • Fax +49 (0)8861-210-3273

E-mail: info-hks-rcc@hoerbiger.com • www.hoerbigerkompresstechnik.de

**R291E**

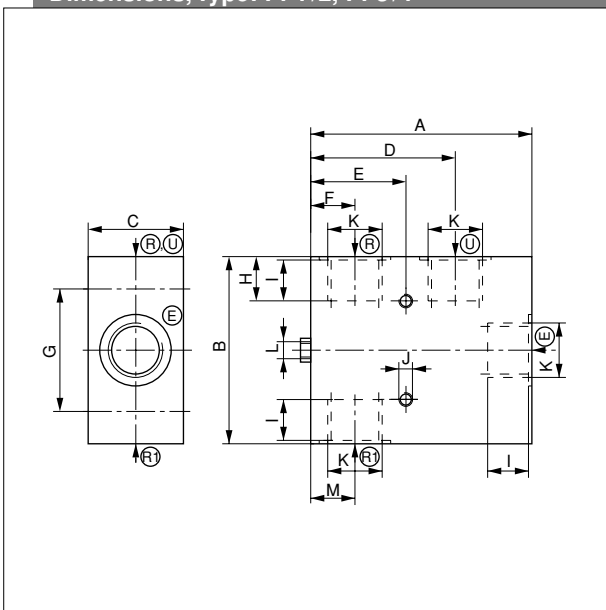
A1R291E03CAD00D

# HOERBIGER

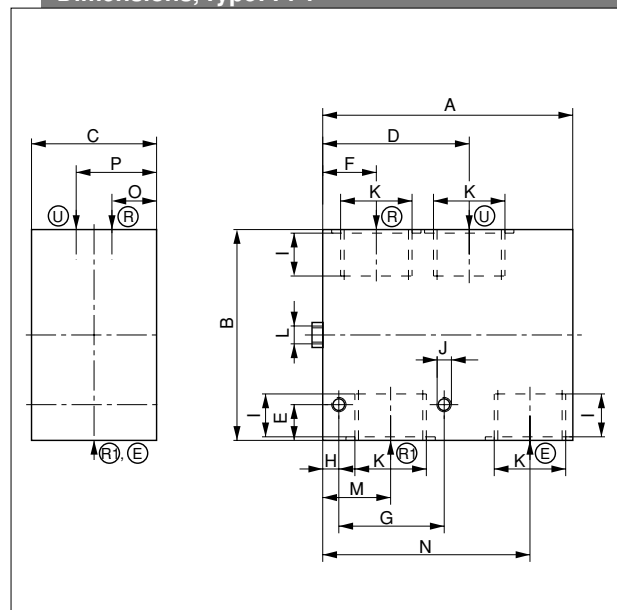
## Details

Type		TV 1/2	TV 3/4	TV 1	TV 1 1/4	TV 1 1/2
Nominal diameter DN	mm	15	20	25	32	40
Max. working pressure PS	bar (g)	16				
Port sizes		G1/2	G3/4	G1	G1 1/4	G1 1/2
$K_v$ value	m <sup>3</sup> /h	4	4	7	15	17
Medium		Mineral oils and synthetic oils (diester oils)				
Temperature range	°C	-10 to +110				
Regulation temperature range	°C	Version I: start of stroke: 55 - end of stroke: 70 Version II: start of stroke: 70 - end of stroke: 85				
Max. flow rate, inlet	l/min	45	70	140	180	400
Dimensions	mm	See dimension table				
Materials		Aluminium forging alloy, anodized, stainless steel, zinc-plated steel, brass, Viton				
Weight	kg	0.8	0.9	1.6	1.7	2.3

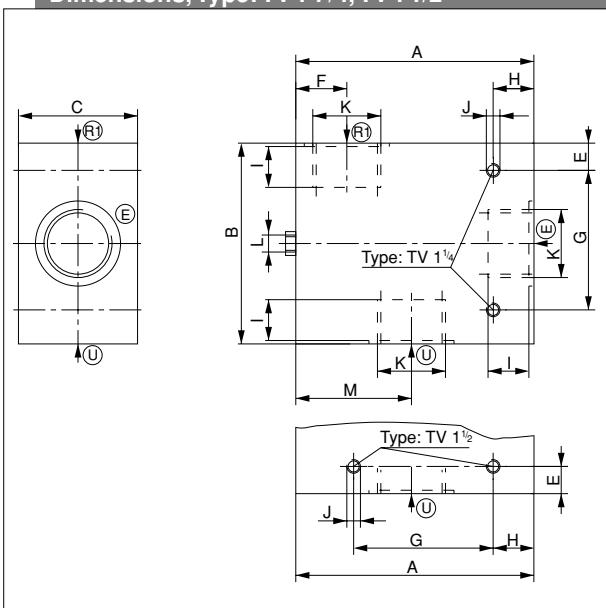
### Dimensions, Type: TV 1/2, TV 3/4



### Dimensions, Type: TV 1



### Dimensions, Type: TV 1 1/4, TV 1 1/2



### Dimension Table (dimension in mm)

Type	TV 1/2	TV 3/4	TV 1	TV 1 1/4	TV 1 1/2
<b>A</b>	100	105	120	120	140
<b>B</b>	80	80	100	110	120
<b>C</b>	40	45	60	60	70
<b>D</b>	59	59	70	-	-
<b>E</b>	40	40	17	20	15
<b>F</b>	22.5	21	24	32.5	39
<b>G</b>	50	50	50	70	90
<b>H</b>	15	15	7.5	24.5	14.5
<b>I</b>	14	16	20	20	20
<b>J</b>	∅7	∅7	∅8	∅10.5	∅10,5
<b>K</b>	G1/2	G3/4	G1	G1 1/4	G1 1/2
<b>L</b>	M5	M5	M5	M5	M5
<b>M</b>	22.5	21	32.5	60	75.5
<b>N</b>	-	-	98	-	-
<b>O</b>	-	-	22	-	-

(R), (R1), (U), (E) = Names of connections