

## Thermostatic Valve

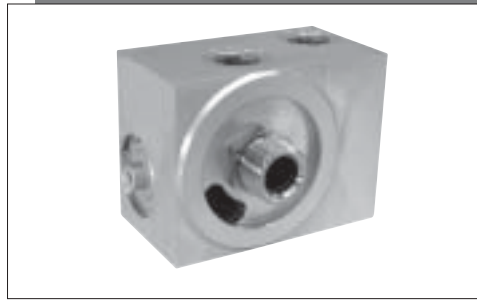
### Type: TVFT

#### Application

Regulation of the oil flow in oil-injected screw compressors. Fastest possible regulation of the oil temperature to the optimum operating temperature to ensure full performance of the oil and to avoid premature condensation fall-out.

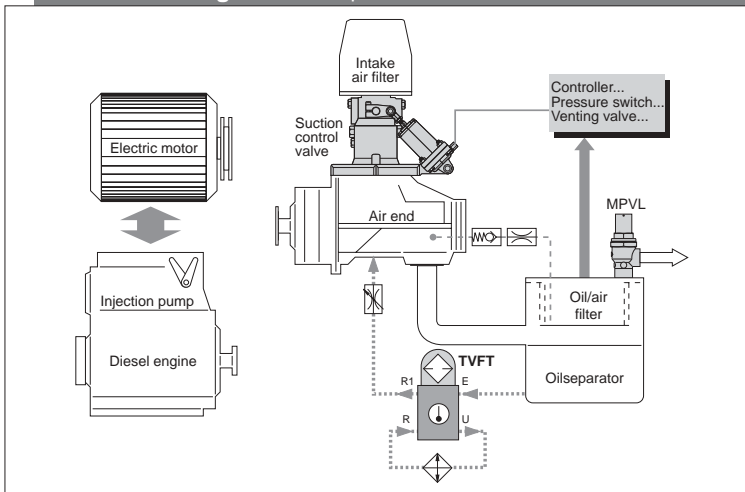
#### Function

Depending on the temperature of the oil coming in from the oil separator, the TVFT valve regulates the amount of oil flowing through the oil cooler. The oil flowing back from the oil cooler mixes with the remaining hot oil and then goes into the fitted filter. After filtration the oil leaves the TVFT and returns to the air end system.



**⚠ Attention! Never attempt to disassemble a cylinder whilst under pressure!**

#### Installation Diagram for Compressor with TVFT



#### Installation

The thermostatic valve is installed between the oil separator and the oil filter.

#### Ports:

- E Oil coming from the oil separator
- U Hot oil going to the oil cooler
- R Oil coming back from the oil cooler
- R1 Oil going to the air end

A suitable filter must be fitted to the TVFT.

#### Ordering Details:

Type designation and regulation temperature range, e.g. TVFT 1/2-55°

#### Details

Type		TVFT 1/2	TVFT 3/4	TVFT 1 1/4
Nominal diameter DN	mm	15	20	32
Max. working pressure PS	bar (g)	16		
Port sizes		G1/2	G3/4	G1 1/4
$K_v$ value	m <sup>3</sup> /h	4	4	14
Medium		Mineral oils and synthetic oils (diester oils)		
Temperature range	°C	-10 bis +110		
Regulation temperature range	°C	Version I: start of stroke: 55 - end of stroke: 70 Version II: start of stroke: 70 - end of stroke: 85		
Max. flow rate, inlet	l/min	45	70	180
Dimensions	mm	See dimension tabel		
Materials		Aluminium forging alloy, anodized, stainless steel, zinc-plated steel, brass, Viton		
Weight	kg	1.2	1.4	2.7

## HOERBIGER KOMPRESSORTECHNIK GMBH

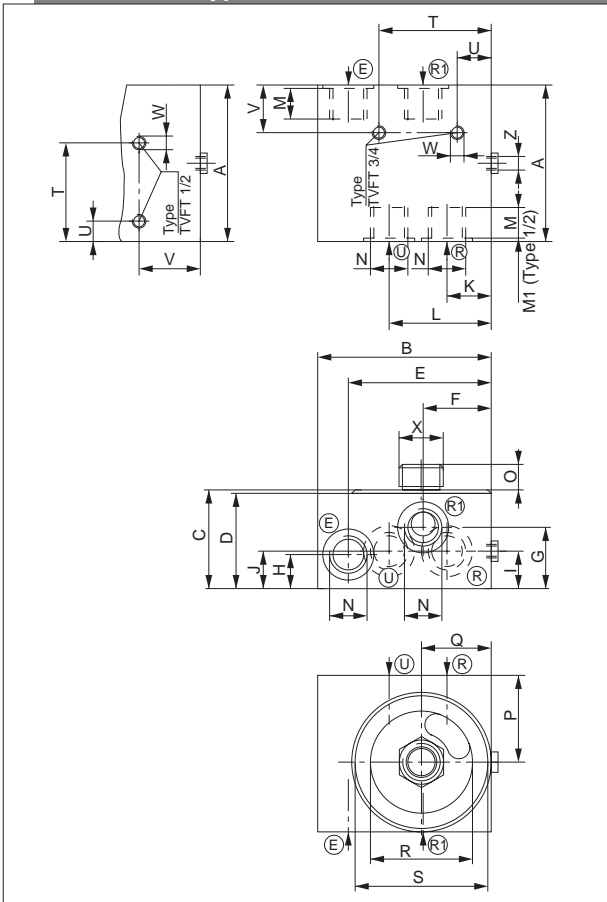
Im Forchet 5 • D-86956 Schongau  
 Phone +49 (0)8861-210-0 • Fax +49 (0)8861-210-3273  
 E-mail: rcc@hks.hoerbiger.de • www.hoerbigerkompresortechnik.de

**R292E**

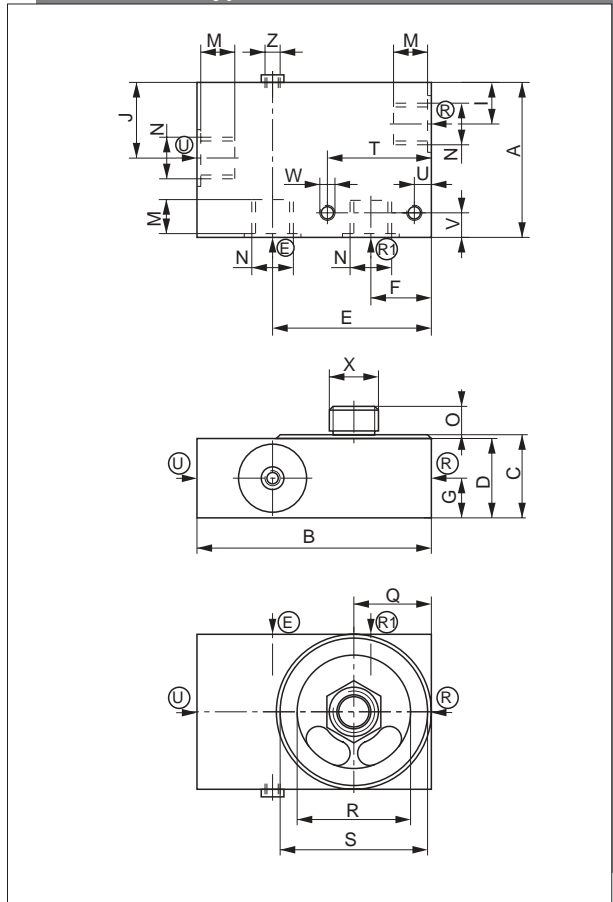
A1R292E03CAD00D

# HOERBIGER

**Dimensions, Type: TVFT 1/2, TVFT 3/4**



**Dimensions, Type: TVFT 1 1/4**



**Dimension Table (dimension in mm)**

Type	TVFT 1/2	TVFT 3/4	TVFT 1 1/4
A	80	95	120
B	105	100	180
C	59	59	60
D	57	57	58
E	87.5	82.5	123
F	40	36	45
G	35	36	29.5
H	20	20	-
I	15	21	33
J	26	21	60
K	22.5	22	-
L	55	59	-
M/M1	18/13	18	20
N	G1/2	G3/4	G1 1/4
O	15	15	24
P	40	55	-
Q	40	40	69
R	ø58	ø59	ø90
S	ø76	ø76	ø116
T	56	65	80
U	6	15	10
V	39	28	17
W	M8/17 deep	M8/17 deep	M12/17 deep
X	TC1	G3/4	G1 1/4
	TC2	3/4-16 UNF	1 1/2-16 UN
	TC3	1-12 UNF	-
Z	M5	M5	M5

(R), (R1), (U), (E) = Names of connections